

LOW PROFILE LOAD CELL ASSEMBLY FOR SILO, TANK AND VESSEL WEIGHING

capacities 2.5t - 30t



Vessel weighing problems solved simply and cost effectively.

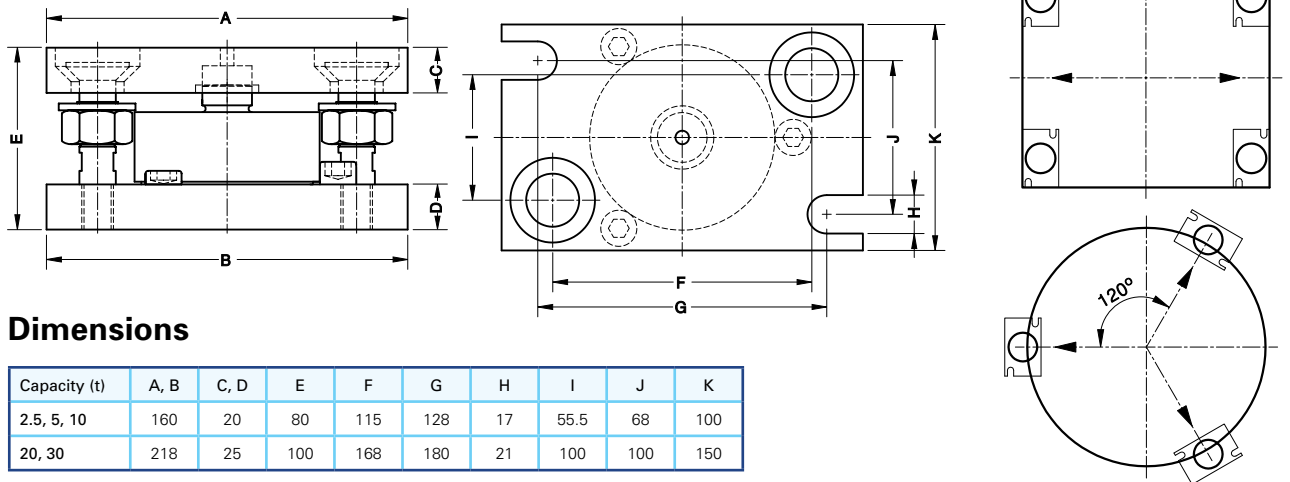
The T20 stainless steel compression load cell is specifically designed as a reliable, simple, low cost solution for weighing of tanks, silos and vessels where level measurement is the main criteria.

The load cell is mounted in either a zinc plated or stainless steel low profile, extremely compact mounting assembly which has integral jacking to allow load cell installation and removal, lift-off prevention and allowance for angular mis-alignment. The design is suitable for use either as a totally live system with load cells under all legs/support points of the vessel or where cost is paramount, in a dummy system with either one live and two dummy cells or two live and two dummy cells.

- Stainless steel compression load sensor
- Fully welded and hermetically sealed construction to IP68 / IP69K
- Allows vessel expansion and contraction
- Integral jacking facility
- 1000 division accuracy
- Low profile, extremely compact loading assembly
- Integral lift off prevention
- Allowance for angular mis-alignment
- 5 year warranty
- Durable and chemical resistant polyurethane cable

T20

technical specification...



Dimensions

Capacity (t)	A, B	C, D	E	F	G	H	I	J	K
2.5, 5, 10	160	20	80	115	128	17	55.5	68	100
20, 30	218	25	100	168	180	21	100	100	150

All dimensions in mm

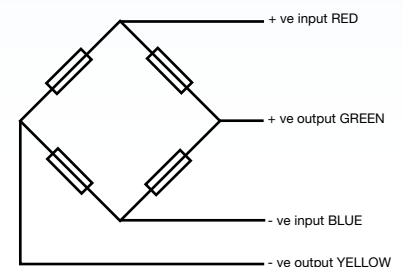
T20 Load Cell

	Load cell specification	Units
Load Cell Capacities	2.5, 5, 10, 20, 30	t
Full Load Output	2.0 +/- 0.1%	mV/V
Excitation Recommended	10	V
Excitation Maximum	15	V
Safe Service Load	150	%*
Ultimate Load	200	%*
Combined Error	< +/- 0.05	%*
Repeatability	< +/- 0.015	%*
Output at Zero Load	+/- 2.0	%*
Input Resistance	800 +/- 30	Ω
Output Resistance	700 +/- 5	Ω
Operational Temperature Range	-30 to +70	$^{\circ}\text{C}$
Compensated Temperature Range	-10 to +40	$^{\circ}\text{C}$
Temperature Coefficient on Zero	< +/- 0.002	%* / $^{\circ}\text{C}$
Temperature Coefficient on Span	< +/- 0.0036	%* / $^{\circ}\text{C}$
Environmental Protection	IP68	
Insulation	> 5000	M Ω
Cable Length	10	m

*All percentages are related to Full Rated Load

LA20 Mounting Assembly

Mounting Assembly	Load Cell Capacity (t)	Maximum Lift Off (kg)	Maximum Side Load (kg)	Maximum Side Offset (mm)
LA20-10T-ZINC LA20-10T-SS	2.5	7342	2243	+/- 3
	5			
LA20-30T-ZINC LA20-30T-SS	10	12644	3263	+/- 3.5
	20			
	30			



Electrical Connections

Via 4 wire, 5.7mm diameter, screened polyurethane cable.
Screen not connected electrically to load cell.

DISTRIBUTED BY:



THAMES SIDE SENSORS LTD

Unit 10, io Trade Centre, Deacon Way, Reading, Berkshire RG30 6AZ

tel: +44 (0) 118 941 1387

fax: +44 (0) 118 941 2004

sales@thames-side.co.uk

www.thames-side.com



Issue: T20.07.13

Our policy is one of continuous product enhancement. We therefore reserve the right to incorporate technical modifications without prior notification.