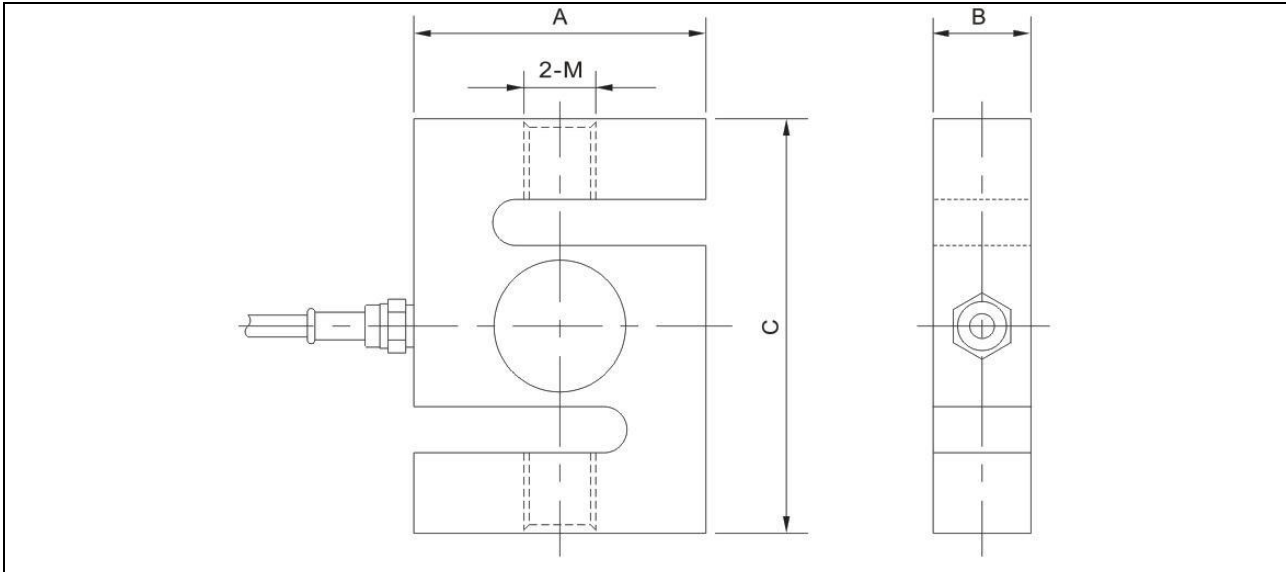




Loadcell

S type loadcell, tension and compression. Good output symmetry, compact structure, simple to install, full range of capacities. Suitable for electromechanical scale, crane scale, hopper scale and various special scales.



Main dimensions and accessories :

Capacity		Size mm			Thread	
Klb	Kg	A	B	C	mm	inch
0.025-0.15	5-50	51.0	13.0	64.0	M8x1.25	1/4-28
0.2-1.5	100-500	51.0	19.1	76.0	M12x1.75	1/2-20
2-4	1-2t	54.0	25.4	76.0	M12x1.75	1/2-20
5-10	2.5-5t	76.0	25.4	108.0	M18x1.5	3/4-16
15	7.5t	100.0	32.0	140.0	M24x2	1-14
20	10t	126.0	50.0	178.0	M30x2	1 1/4-12
40	20t	140.0	60.0	188.0	M39x2	1 1/2-12

Specifications :

Rated output (mV/V)	2.00 ± 0.010 3.00 ± 0.010
Nonlinearity	± 0.02% FS
Hysteresis	± 0.02% FS
Repeatability	± 0.01% FS
Creep (30 minutes)	± 0.02% FS
Zero balance	± 1.00% FS
Temperature Effect on Zero	± 0.02% FS/10°C
Temperature Effect on Output	± 0.02% FS/10°C
Input Resistance (Ω)	385 ± 10
Output Resistance (Ω)	350 ± 3
Insulation Resistance	> 5000M Ω
Excitation Voltage	10V (DC/AC)
Compensated Temperature Range	-10°C to +50°C
Operating Temperature Range	-20°C to +60°C
Safe Overload	120% FS
Cable	Φ 5.4 x 5m

Cable color code: Input: Red(+) Black (-); Output: Green(+) White (-)



STENSOR B.V.

Meer en Duin 64b - 2163HC Lisse

Phone : +31(0)88 4224420 – Fax : +31(0)88 4224421

www.stensor.com – info@stensor.com