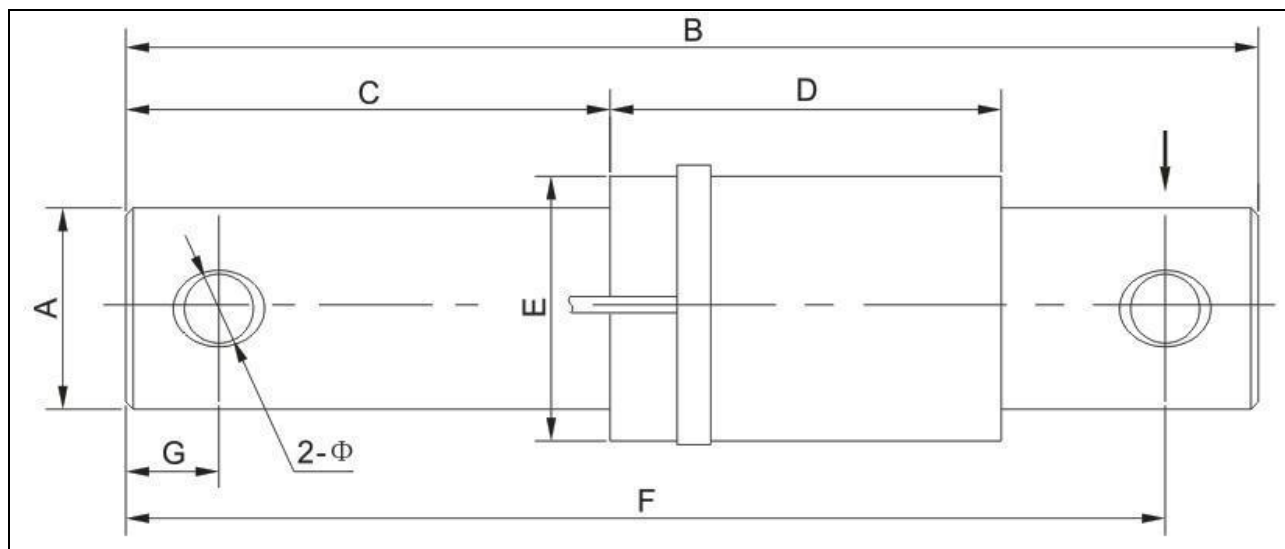




Shear beam loadcell

Single fixed beam loadcell, rotundity section structure, simple to install, easy to use, good interchange ability. Alloy steel, nickel plated, special potted seal and cover board seal, good moisture proof, ideal for various hostile environment. Widely used in fodder, rubbish transport truck, hopper scale, etc.



**Main dimensions and accessories :**

Capacity	Size mm							
t	A	B	C	D	E	F	G	Φ
5	54.0	305.0	150.0	85.0	75.0	283.0	22.0	20.0
7	62.0	340.0	155.0	100.0	88.0	300.0	29.0	26.0

**Specifications :**

Rated output (mV/V)	1.2 ± 0.010
Nonlinearity	± 0.05% FS
Hysteresis	± 0.03% FS
Repeatability	± 0.02% FS
Creep (30 minutes)	± 0.02% FS
Zero balance	± 1.00% FS
Temperature Effect on Zero	± 0.02% FS/10°C
Temperature Effect on Output	± 0.02% FS/10°C
Input Resistance (Ω)	385 ± 10
Output Resistance (Ω)	350 ± 3
Insulation Resistance	> 5000M'Ω
Excitation Voltage	10V (DC/AC)
Compensated Temperature Range	-10°C to +50°C
Operating Temperature Range	-20°C to +60°C
Safe Overload	120% FS
Cable	Φ 6 x 10m

Cable color code: Input: Red(+) Black (-); Output: Green(+) White (-)



**STENSOR B.V.**

Meer en Duin 64b - 2163HC Lisse

Phone : +31(0)88 4224420 – Fax : +31(0)88 4224421

www.stensor.com – info@stensor.com